

State of Wyoming Corner Record

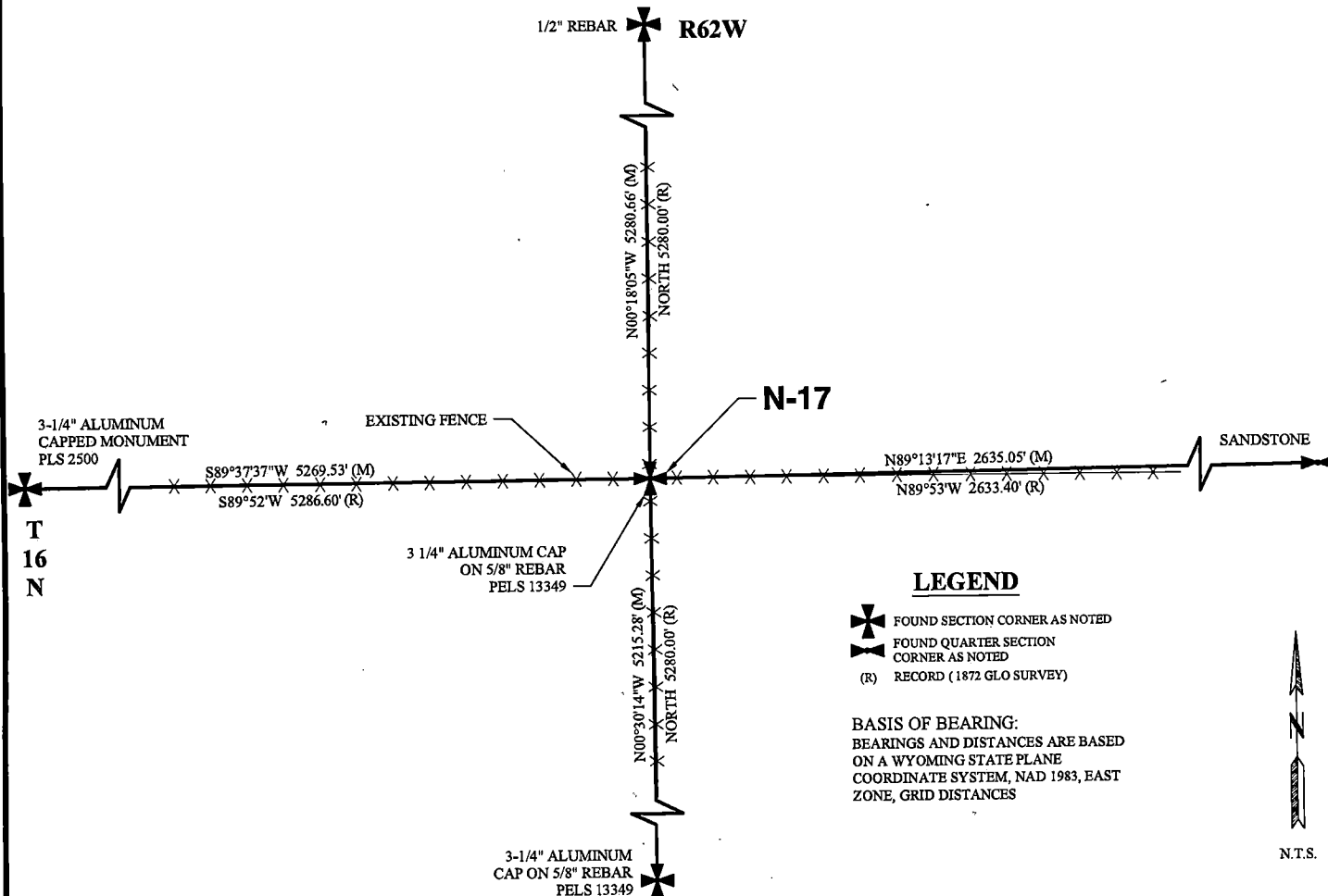
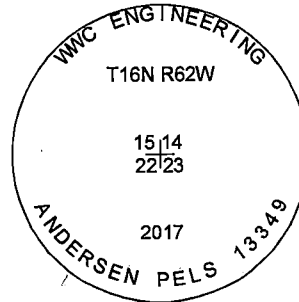
(In compliance with the CORNER PERPETUATION AND FILING ACT, Wyoming Statutes, 1997, Section 33-29-140, et seq., and the Rules and Regulations of the Board of Registration for Professional Engineers and Professional Land Surveyors)

Reverse side of this form may be used if more space is needed.

Record of original survey and citation of source of historical information (if corner is lost or obliterated.) Description of corner monumentation evidence found and/or monument and accessories established to perpetuate the location of this corner. Sketch of relative location of monument, accessories, and reference points with course and distance to adjacent corner(s) (if determined in this survey). Method and rationale for reestablishment of lost or obliterated corner.

EVIDENCE RECORD: 1872 GLO Survey: North between sections 22 & 23, 80.00 chains. Set sand stone 18"x11"x4" for corner to sections 14, 15, 22 & 23.

EVIDENCE FOUND: November 2017: Sand stone from 1872 GLO survey not found. Accepted north-south east-west fence intersection as best available evidence for the corner to sections 14, 15, 22 & 23. Set a 3 1/4" aluminum cap marked as shown on a 5/8" rebar, 24" long, flush with ground surface at fence intersection.



LEGEND

- FOUND SECTION CORNER AS NOTED
- FOUND QUARTER SECTION CORNER AS NOTED
- (R) RECORD (1872 GLO SURVEY)

BASIS OF BEARING:
BEARINGS AND DISTANCES ARE BASED ON A WYOMING STATE PLANE COORDINATE SYSTEM, NAD 1983, EAST ZONE, GRID DISTANCES

N.T.S.

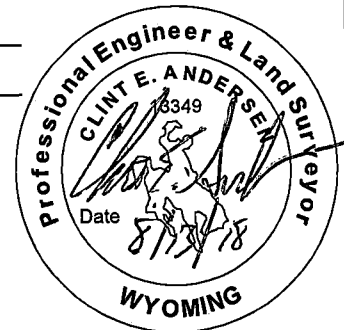
Date of Field Work: November 30, 2017 Office Reference: 2017-135

CROSS INDEX DIAGRAM

1	2	3	4	5	6	7	8	9	10	11	12	13	14	15	16	17	18	19	20	21	22	23	24	25		
A																									A	
B																									B	
C	6					5																			C	
D																										D
E																										E
F																										F
G	7					8																				G
H																										H
J																										J
K																										K
L	18					17																				L
M																										M
N																										N
O																										O
P	19					20																				P
Q																										Q
R																										R
S																										S
T	30					29																				T
U																										U
V																										V
W																										W
X	31					32																				X
Y																										Y
Z																										Z
1	2	3	4	5	6	7	8	9	10	11	12	13	14	15	16	17	18	19	20	21	22	23	24	25		

Land Surveyor / Firm / Address
Clint E. Andersen
WVC Engineering
51 N. 15th Street, Suite 1
Billings, MT 59101
 Telephone: (406) 894-2210

This corner record was prepared by me or under my direction and supervision.
SEAL & SIGNATURE



Corner Name: Northeast Corner Section: 22 T 16N R 62W ; 6TH P.M. Cross-Index No.: N-17
 SBRPEPLS/PLSW: March 1994; PLSW January 1998

RECP #: 739843
 RECORDED 10/1/2018 AT 1:29 PM BK# 2598 PG# 277
 Debra K. Lee, CLERK OF LARAMIE COUNTY, WY. PAGE 1 OF 1